

# Appendix 1

## Summary Evidence Report

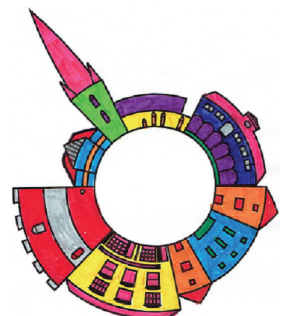
# Ross-on-Wye

## Neighbourhood Development Plan 2018 - 2032

Consultation Draft  
November 2018



NATIONAL  
LOTTERY FUNDED



## APPENDIX 1: SUMMARY EVIDENCE REPORT

The Neighbourhood Plan is built upon evidence from two main sources: external (material produced by others such as Herefordshire Council) and internal (material that applies specifically to Ross-on-Wye, including locally-generated material).

The majority of the internal evidence has been produced at various times during the preparation of the plan. The only exception is those reports produced by Herefordshire Council, each of which is dated. The locally-generated reports have all been checked and, where necessary, updated to relate to the plan (even if they still show an original date).

### EXTERNAL EVIDENCE

The main links are listed below with appropriate hyperlinks.

- Herefordshire Council (only the main items are listed here):
  - **Core Strategy:**  
[https://www.herefordshire.gov.uk/download/downloads/id/1788/core\\_strategy\\_sections\\_combined.pdf](https://www.herefordshire.gov.uk/download/downloads/id/1788/core_strategy_sections_combined.pdf)
  - **Core Strategy evidence base:**  
[https://www.herefordshire.gov.uk/download/downloads/id/1791/appendix\\_2\\_-\\_evidence\\_base.pdf](https://www.herefordshire.gov.uk/download/downloads/id/1791/appendix_2_-_evidence_base.pdf)
  - **Strategic Housing Land Availability Assessment:**  
[https://www.herefordshire.gov.uk/directory\\_record/2143/strategic\\_housing\\_land\\_availability\\_assessment.pdf](https://www.herefordshire.gov.uk/directory_record/2143/strategic_housing_land_availability_assessment.pdf)
  - **Local Housing Market Assessment:**  
[https://www.herefordshire.gov.uk/directory\\_record/2129/local\\_housing\\_market\\_assessment.pdf](https://www.herefordshire.gov.uk/directory_record/2129/local_housing_market_assessment.pdf)
  - **Local Transport Plan:**  
[https://www.herefordshire.gov.uk/info/200136/travel\\_and\\_transport/220/local\\_transport\\_plan](https://www.herefordshire.gov.uk/info/200136/travel_and_transport/220/local_transport_plan)
  - **Urban Fringe Sensitivity Analysis:**  
[http://www.herefordshire.gov.uk/directory\\_record/2117/urban\\_fringe\\_sensitivity\\_analysis.pdf](http://www.herefordshire.gov.uk/directory_record/2117/urban_fringe_sensitivity_analysis.pdf)
- **Wye Valley Area of Outstanding Natural Beauty Management Plan 2015-2020:**  
<http://www.wyevalleyaonb.org.uk/index.php/about-us/management-and-guidance/management-plan-2015-2020/>
- **Natural England Character Area Profiles:**  
<http://publications.naturalengland.org.uk/publication/5018311469301760?category=5871>
- **Environment Agency Flood Mapping** (this is the overall Ross map): <https://flood-map-for-planning.service.gov.uk/confirm-location?eastings=359948&northings=224095&placeOrPostcode=ross%20on%20wye>

### INTERNAL EVIDENCE

These are all available on the Ross-on-Wye Town Council website: <http://www.rosstc-herefordshire.gov.uk/ndp.php>

**Broadmeadows/Tanyard Details:** A more detailed report to support the information about this site/area in the main plan. Produced by the Neighbourhood Plan Steering Group.

**Chase Hotel Report:** A more detailed report on potential development of parts of this site, supported by a Heritage Assessment.

**Development Sites Appraisal:** This considers all the Ross-on-Wye sites submitted in the most recent SHLAA process and others submitted since, outlines options for which to take forward and draws conclusions. Produced by the Neighbourhood Plan Steering Group.

**Facilities Report:** Produced by the Neighbourhood Plan Steering Group with specific evidence produced by community members.

**Green Infrastructure Report:** Produced by the Neighbourhood Plan Steering Group with specific evidence produced by community members.

**Growing Places Report:** Produced by the Neighbourhood Plan Steering Group with specific evidence produced by community members.

**Landowner Contacts:** A report on formal contact with owners of land to be allocated or proposed for development.

**Local Green Spaces Report:** Produced by the plan consultants, drawing from several stages of evidence collection and decision-making to result in the sites shown in the plan.

**Play Report:** Produced by the Neighbourhood Plan Steering Group with specific evidence produced by community members.

**Ross-on-Wye Character Assessment Portfolio:** This includes Ross-specific material from Herefordshire as well as the results of community surveys. It includes an Introduction that explains all the items.

**Settlement Boundary Report:** Produced by the Neighbourhood Plan Steering Group.

**Town Centre Overall Review:** This includes a variety of items relevant to policies for the town centre, some material from Herefordshire Council as well as the results of community surveys. It includes an Introduction that explains all the items.

**Views Report:** Produced by the Neighbourhood Plan Steering Group with specific evidence produced by community members and also drawing from the Landscape Assessment (in the Character Portfolio).

There is also internally produced evidence which generally supports the Plan, but does not support specific policies, as listed below:

**Charity Shops**

**Public Transport Report**

**Shops and Flats Survey Street Plan**

**Signage to Town Centre Car Parks Report**

**Vacant Units**

**Visitor Interview Report**